

Williamsburg Senior Softball League



Membership Business Meeting
March 9, 2021

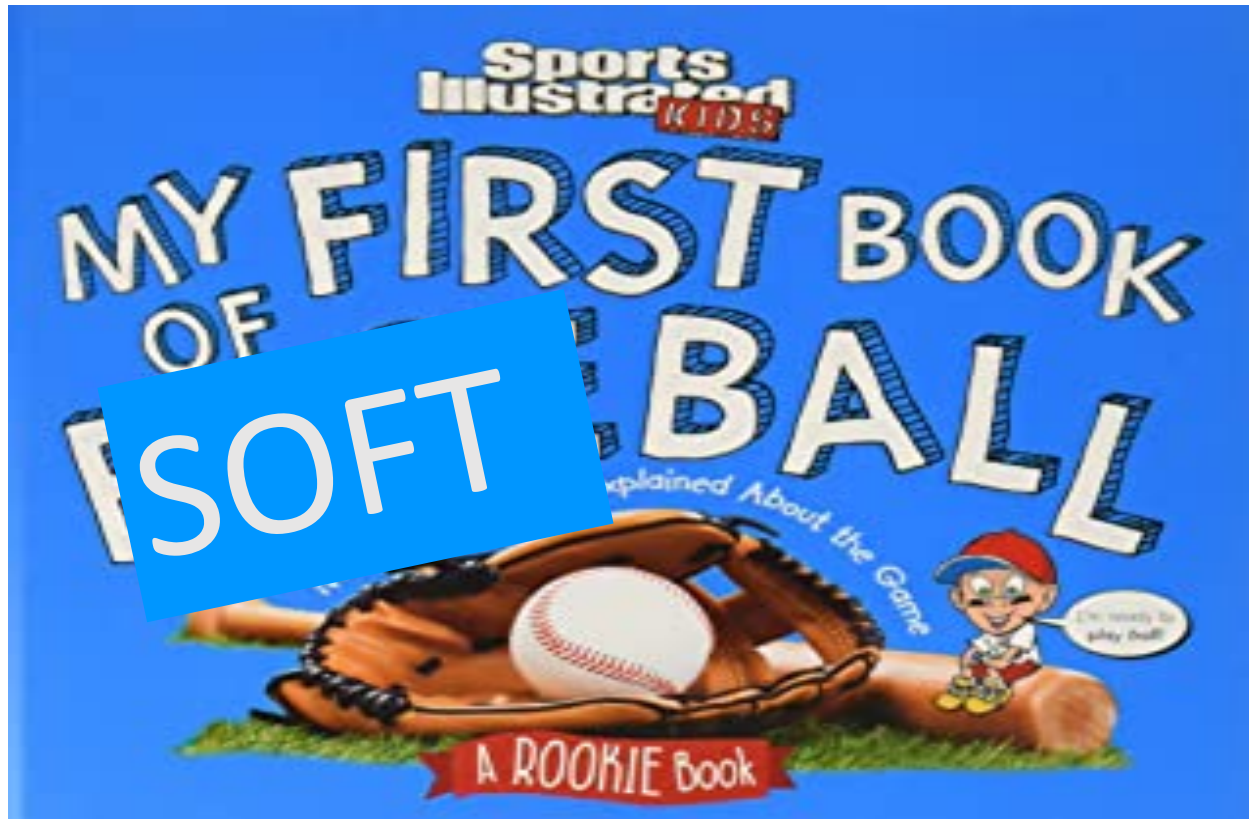
2019 Board of Directors

- Jim Ratkus, Commissioner
- John Antretter, Deputy Commissioner **
- Ric Zakour, Secretary
- John Stout, Treasurer **
- Ben Di Vito, Webmaster
- Dick Hoell, Ad Hoc **

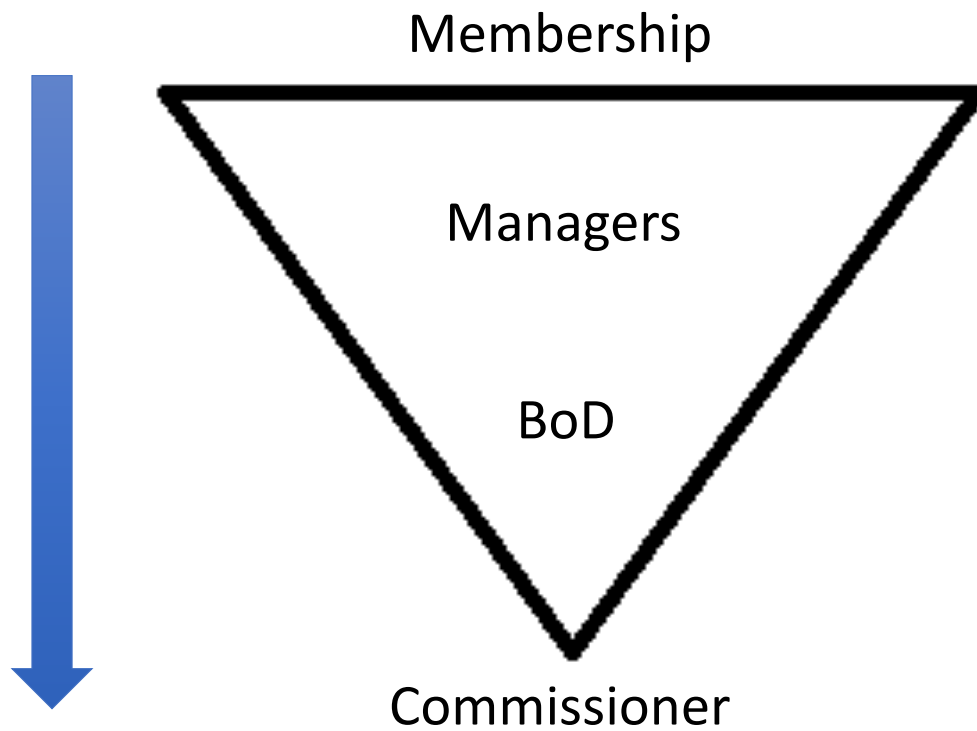
Managers

- Mike Allen – 3rd season (Practices)
- Bill Punch – 3rd season
- Jamie Kehayes – 3rd season & last year's champions
- Tom Figgs – 2nd season
- Rich Tindall – 1st season
- Volunteers? May need 2 this year!

Rookies?



WSSL Hierarchy



2019 WSSL inaugural season, 36 members,
3 teams, and played a 24 game schedule

2021 - Season 3, expect 75 – 85 members,
5-7 teams, and a 40 game schedule

Future – 150 members, two 6 team divisions

2020 Expectations

- Six sponsors
- Six teams
- 90 members

2020 Reality (Covid)

- Five sponsors
- Four teams
- Approx. 75 Members



Covid-19

- We take it very seriously as we are all in the “high risk” population
- We suspended operations on March 12 last year
- Started season on June 23 after Phase II of reopening
- Finished a 25/26 games schedule on October 29
- Held first All-Star game on November 3rd
- No end-of-season banquet
- Our precautionary measures worked without failure in 2020
- No one knows how it will affect us this year...Vaccinations?



Major Leaguers wearing masks, exhibition game, Pasadena, CA, January 26, 1919.
Spanish Flu epidemic, February 1918 – April 1920

Corporate Sponsors



Javier Fuentes, Agent



Tidewater Orthopaedics
Specialized Care You Can Trust



personal fitness & wellness defined

2021 Milestone Dates

- March 9 – Full membership meeting (delayed due to Covid rstns)
- March 11 – Begin evaluation period at Quarter Path Park (field 3)
- March 25 (approx) – Final team assignments
- April 13 – 2021 season opening day (shirts possible)
- October 28 (approx) – 2020 season finale
- Nov XX – All-Star Game
- Nov XX - Banquet? Strictly Covid driven

2021 Calendar

January							February							March							April						
Su	Mo	Tu	We	Th	Fr	Sa	Su	Mo	Tu	We	Th	Fr	Sa	Su	Mo	Tu	We	Th	Fr	Sa	Su	Mo	Tu	We	Th	Fr	Sa
27	28	29	30	31	1	2	31	1	2	3	4	5	6	28	1	2	3	4	5	6	28	29	30	31	1	2	3
3	4	5	6	7	8	9	7	8	9	10	11	12	13	7	8	9	10	11	12	13	4	5	6	7	8	9	10
10	11	12	13	14	15	16	14	15	16	17	18	19	20	14	15	16	17	18	19	20	11	12	13	14	15	16	17
17	18	19	20	21	22	23	21	22	23	24	25	26	27	21	22	23	24	25	26	27	18	19	20	21	22	23	24
24	25	26	27	28	29	30	28	1	2	3	4	5	6	28	29	30	31	1	2	3	25	26	27	28	29	30	1
31	1	2	3	4	5	6																					

May							June							July							August						
Su	Mo	Tu	We	Th	Fr	Sa	Su	Mo	Tu	We	Th	Fr	Sa	Su	Mo	Tu	We	Th	Fr	Sa	Su	Mo	Tu	We	Th	Fr	Sa
25	26	27	28	29	30	1	30	31	1	2	3	4	5	27	28	29	30	1	2	3	1	2	3	4	5	6	7
2	3	4	5	6	7	8	6	7	8	9	10	11	12	4	5	6	7	8	9	10	8	9	10	11	12	13	14
9	10	11	12	13	14	15	13	14	15	16	17	18	19	11	12	13	14	15	16	17	15	16	17	18	19	20	21
16	17	18	19	20	21	22	20	21	22	23	24	25	26	18	19	20	21	22	23	24	22	23	24	25	26	27	28
23	24	25	26	27	28	29	27	28	29	30	1	2	3	25	26	27	28	29	30	31	29	30	31	1	2	3	4
30	31	1	2	3	4	5																					

September							October							November							December						
Su	Mo	Tu	We	Th	Fr	Sa	Su	Mo	Tu	We	Th	Fr	Sa	Su	Mo	Tu	We	Th	Fr	Sa	Su	Mo	Tu	We	Th	Fr	Sa
29	30	31	1	2	3	4	26	27	28	29	30	1	2	31	1	2	3	4	5	6	28	29	30	1	2	3	4
5	6	7	8	9	10	11	3	4	5	6	7	8	9	7	8	9	10	11	12	13	5	6	7	8	9	10	11
12	13	14	15	16	17	18	10	11	12	13	14	15	16	14	15	16	17	18	19	20	12	13	14	15	16	17	18
19	20	21	22	23	24	25	17	18	19	20	21	22	23	21	22	23	24	25	26	27	19	20	21	22	23	24	25
26	27	28	29	30	1	2	24	25	26	27	28	29	30	28	29	30	1	2	3	4	26	27	28	29	30	31	1
							31	1	2	3	4	5	6														

<u>Play Date</u>	<u>Teams</u>	<u>Schedule</u>
Date 1, 11, 21, 31, 41	A B C D E	A off B/C D/E
Date 2, 12, 22, 32, 42	A B C D E	B off C/D E/A
Date 3, 13, 23, 33, 43	A B C D E	C off D/A B/E
Date 4, 14, 24, 34, 44	A B C D E	D off E/C A/B
Date 5, 15, 25, 35, 45	A B C D E	E off C/A B/D
Date 6, 16, 26, 36, 46	A B C D E	A off E/D C/B
Date 7, 17, 27, 37, 47	A B C D E	B off A/E D/C
Date 8, 18, 28, 38, 48	A B C D E	C off E/B A/D
Date 9, 19, 29, 39, 49	A B C D E	D off B/A C/E
Date 10, 20, 30, 40, 50	A B C D E	E off D/B A/C



- Members need to be involved
- Updates sent after each BoD meeting
- Always recruiting new members
- Always on the lookout for a sponsor
- No ideas are off the table for the league
- Board stepped back from decisions: YOUR league
- Created committees - rules, recruiting, scheduling subs/umps/scorekeepers
- League audit

2020 Season Back Story

- When Phase II of openings began after the Covid-19 shutdowns, WSSL requested to be allowed to play at Kiwanis Field and was initially denied.
- We appealed decision to the Williamsburg City Manager, and were quickly approved.
- It was apparent during these “negotiations” the WCM had no clue who we were.
- So, we embarked on a plan to introduce the WSSL to local politicians and elicit their support for a “Home Base”.

Warhill Rec Center Master Plan

- January 15 email to JCC Director of Parks & Recreation, John Carnifax
- Very receptive and advised the Warhill Master Plan was under review
- Invited WSSL to participate in zoom call for review
- Called held on February 18, about 23 coaches, directors, etc.
- Local sports teams represented – volleyball, soccer, youth baseball, Babe Ruth baseball, lacrosse, youth football, & WSSL
- Made our case for quad complex fields 250'-270' fences
- Support from Youth Baseball Director
- Outlook Promising (2-5 years)

Warhill Sports Complex



Williamsburg Regional Sports Complex

- Lunch with Mayor Doug Pons on January 19
- Introduced ourselves, told him about the WSSL
- He supports us
- Told us about the WRSC coming in the 2022 – 2024 time frame
- Planned for property on/near CW Visitors' Center
- He was positive regarding space available for a softball complex

Emails to Williamsburg City Council and James-City County Board of Supervisors

- February 12 sent one-page introductory email & fact sheet to members (five members of each)
 - To-date, we have received four responses, all very supportive!
-
- **Now, decision-makers know who we are!!!**

New Business

- Now in our 3rd year our By-Laws are kicking in, so half of our board is up for election.
 - Elected Board Members serve a two-year term
 - Nominations?
 - Deputy Commissioner - John Antretter
 - Treasurer – John Stout
 - Ad Hoc – Dick Hoell
-
- Need a volunteer to help with audit.

Start Training Today!!!

- Avoiding injuries critical to enjoyment
- Be in the best shape that you can be
- Please start stretching today -- it's what you do everyday that matters



Team Assignments

- All players subject to new team assignments
- A committee of 6 players will select equally balanced teams
- Player availability is a selection factor -- be honest when you declare your availability
- Once teams are compiled, managers will draw for teams
- Trades allowed after process completed

Evaluation Camp

- What is Evaluation Camp?
- Starting 3/11, 10:00 at Quarterpath Recreation Center, Williamsburg.
- 3 to 4 (2) hour practice sessions that will showcase the talents of new players to the WSSL. Bring water, bat, glove and a chair if you like.
- The Goal: to draft up to 6 well-balanced, equally competitive teams.
- How are we going to do this?
- Skill evaluation: throw, catch, run, fielding and hitting. A series of fielding drills, batting practice, game-like scrimmages.
- Most players will continue to improve during the season.
- This is going to be the most “FUN” you’ve had in a long time.



2021 Covid-19 Procedures

- 1. WSSL Guidelines for Participation during the Covid-19 Pandemic
- 2. Sign the Williamsburg Senior Softball League Covid-19 Waiver and Release of Liability form
- 3. Sign the City of Williamsburg Covid-19 Warning and Disclaimer

Rules Committee

- Billy Wagner - Blue
- Larry Rouse – Gold
- Ed Conner - Blue
- Mike Wells - Silver
- James Wilson - Red

Rules Changes*

- 1. Definitions
- 4.1 Players
- 5.5 Extra Inning Game
- 8. Base Running
 - 8.2 Base Stealing
 - 8.5 Substitute Runners
 - 8.6 Courtesy runners
- 10. Umpires
- 11.2 Protests

* These Rules changes are highlighted in blue in Rules and Procedures Manual Rev 21.1 posted on the WSSL web site

Rules Changes

- **1. Definitions**

- 1.4 ***Substitute Runner*** runs from home for a designated batter. The designated batter must have a chronic injury or chronic condition.
- 1.5 ***Courtesy Runner*** is a substitute runner for a batter who reaches base.

Rules Changes

4. Players

- 4.1.1 Before each season begins, a player with a long-term chronic injury that prohibits him from running bases must declare his condition on the player application. The player then requests a Substitute Runner from Home Plate which requires approval by the Board. **This is a player's season declaration approved by the Board, not a manager's game day decision.**
- 4.1.2 During the season, if a player sustains a long-term chronic injury that will prohibit him from running the bases, he can request from the Board that his status be changed to require a Substitute Runner. The request should be an email or text to the Commissioner WSSL2019@gmail.com

Rules Changes

5.5 Extra Inning Procedure

If the score is tied at the end of regulation play, an extra-inning procedure will apply. Starting in the top of the extra inning (typically the 8th inning), the offensive team shall begin its turn at bat with the player who batted last in the previous inning being placed on second base. **A Courtesy Runner cannot be used for this player.** If the player who batted last in the previous inning is one of the players designated to have a Substitute Runner (Rule 4.1.1 & 4.1.2), then the player that was the Substitute Runner for that batter will be used as the runner. There are no run limits in the extra inning. Should the score be tied at the end of the extra inning, then the game will end in a tie.

Rules Changes

8. Base Running

- 8.2 Base-stealing is not permitted. A runner cannot leave a base until the batter hits the ball. **A runner that starts running before contact or without any contact made on the ball, will be called out.** On a foul ball, the runner who started running when the batter hit the ball must return to the base immediately so that play may resume.

Rules Changes - Rule 8.5 Substitute Runners

- 8.5.2 The manager will ask a player to run for the designated batter. The player must agree to be a Substitute Runner. It's the player's decision without retribution. Once a player has agreed to be a Substitute Runner, he must run for that batter every time that designated batter comes to bat.
- 8.5.3 A Substitute Runner can only be used for a particular designated batter and **cannot** be used as a Courtesy Runner.
- 8.5.4 Prior to the start of the game, each manager shall let the opposing manager and Home Plate Umpire know the names of the designated batters needing Substitute Runners and the name of the player assigned to run for each designated batter.
- 8.5.5 The Substitute Runner from home must start from a position behind Home Plate, as marked before the start of each game. **The Substitute Runner cannot start running until the batter hits the ball. A Substitute Runner that starts running before contact on the ball, whether fair or foul, will be called out. A Substitute Runner that starts running without any contact made on the ball, will be called out.**

Rules Changes – Rule 8.6 Courtesy Runners (1 of 2)

- 8.6.1 Once a batter reaches base, a Courtesy Runner is allowed. The manager may ask the batter to have a Courtesy Runner for them or the batter may offer to be replaced on base. The batter must agree to have a Courtesy Runner. **It is a batter's decision without retribution.** There is no substitution allowed when a Substitute Runner from home is used.
- 8.6.2 Any player on the line-up sheet may be used as a Courtesy Runner from **base one time per game.**
- 8.6.3 **The use of a Courtesy Runner will be limited to one (1) per inning.** If a Courtesy Runner is not used during an inning, then the opportunity is lost. **Use it or lose it per inning.** The Home Plate umpire will keep the tally of the uses.

Rules Changes – Rule 8.6 Courtesy Runners (2 of 2)

- 8.6.4 A Courtesy Runner cannot run for an existing Courtesy Runner except for injury. If the Courtesy Runner is injured during the course of play, then a second Courtesy Runner may be awarded with the approval of the Home Plate Umpire.
- 8.6.5 A Courtesy Runner cannot be used as a Substitute Runner, except in the case of an injury. The Courtesy Runner's status changes to Substitute Runner and the injured Substitute Runner cannot run as either a Courtesy Runner or Substitute Runner for the rest of the game.
- 8.6.6 If a Courtesy Runner has been used in an inning and another base runner gets injured, then a second Courtesy Runner may be awarded with the approval of the Home Plate Umpire. If awarded a second Courtesy Runner in an inning, then the use of a Courtesy Runner in next inning will be forfeited. The opposing Manager will be notified of all changes.

Rules Changes

- **10. Umpires**

- 10.4. Only the team managers have the authority to discuss game conflicts or an umpire's call with the umpire.
- 10.5. Judgement calls by umpires are not under review to be overturned unless the umpire making the call appeals to his teammate(s) for help.

Rules Changes

- **11. Protests**

11.2 The notification of intent to protest **can only be made by a manager** and must be made to the umpire and the opposing manager before the next legal or illegal pitch. The formal written protest should contain the following information: the date, time and location of the game; and all essential facts involved in the matter protested.

Financial Report

Number of Players (2020 Dues)	74	Per Season Costs:		Per Season Costs:	
Number of Games	25.5	Fields	\$485.00	Website Renewal	\$125.95
Teams	4	Jerseys	\$468.13	Hand Sanitizer/Covid Signs	\$130.44
Cash in Bank - Start of Season	\$5,128.55	Caps	\$386.80	12 Umpire Pinnies	\$32.10
		Liability Insurance	\$100.00	All Star Game Patches & Umpire Shirts	\$235.39
Dues & Sponsors		Balls	\$392.74	Gift Cards, Other	\$175.95
Per Person (\$50 X 74 players)	\$3,700.00	Equipment Storage Box	\$383.45	WSSL Loving Cup	\$102.00
2020 Dues Reimbursement	-\$155.00	Umpire Indicators	\$29.58	USPS PO Box	\$106.00
Sponsors (\$500 X 2)	\$1,000.00	Score Books & Eraser Boards	\$76.83	Window Decals	\$22.00
Total	\$4,545.00	Hitting Screens	\$276.06	Total Per Season Costs	\$3588.42
		USA Umpire Clinic	\$60.00	End of Season Cash	\$6125.13
		Extra Hats and Patches	\$40.00	Cost Per Person	\$48.49

57 Survey Responses – Selected Questions

Which of these choices best describes your attitude toward playing senior softball?

1. I favor emphasizing the social experience first and competition second. **40.4%**
2. I favor emphasizing competition first and the social experience second. **36.8%**
3. I favor a strong emphasis on a relaxed athletic and social experience. **21.1%**
4. I favor a strong emphasis on competition. **1.8%**

Which of these factors detracted from your softball experience this year?

1. Injuries or physical limitations **36.8%**
2. None of the above. **36.8%**
3. On-field COVID-19 restrictions **19.3%**
4. Not getting to play in the field enough. **14.0%**
5. Not getting to play preferred position(s). **12.3%**
6. Playing in July and August. **12.3%**
7. Not getting to run the bases enough **10.5%**

2020 Survey Responses

Which of these describes your feelings about how substitute running worked in 2020?

1. Worked fairly well but needs minor adjustment. **45.6%**
2. Teams abused the intent of the rules occasionally. **21.1%**
3. Teams abused the intent of the rules too often. **19.3%**
4. Worked very well; no changes needed. **14.0%**

Select all of the statements below about substitute running that you agree with.

1. Only injured players or those with highly limited mobility should be allowed to have substitute runners. **71.9%**
2. Players should be allowed to run the bases if they wish, even if they're slow runners. **66.7%**
3. The need for substitute runners should be declared before game time. **61.4%**
4. Managers should be allowed one or more substitute runners for competitive reasons. **19.3%**
5. The rules for substitute runners are too complicated. **17.5%**

2020 Survey Responses

We hope to expand our corps of umpires for the 2021 season. Which of these describe your thoughts about umpiring?

1. The quality of umpiring in 2020 was adequate. **82.5%**
2. Two umpires should be the minimum for every game. **47.4%**
3. I don't ever want to be an umpire. **21.1%**
4. I haven't yet served as an umpire, but I'm willing to help the league in 2021. **21.1%**
5. I did some umpiring in 2020 and will continue in 2021. **19.3%**
6. I'd like to attend an umpire clinic, if offered again. **15.8%**
7. I might be willing to umpire in the future, but probably not in 2021. **14.0%**
8. Umpires missed too many calls in 2020. **1.8%**

How would you rate your overall experience with the league in 2020 and your intentions going forward?

1. Great -- I will definitely keep playing. **78.9%**
2. Good -- I will probably return next year. **19.3%**
3. Fair -- I will decide later whether to continue. **1.8%**
4. Disappointing -- I will probably not return. **0.0%**

Website (wsslva.org)

- Website has been up and running since March 2019
- wsslva.org is our own domain
- Navigation and pages adapt to mobile devices
- Day-to-day operation plus information for newcomers
- Please send problem reports and suggestions
- Carl Olexa served as backup webmaster in 2020

Current Website Content

HOME ABOUT OPERATION SEASONS PLAYERS DOCUMENTS CONTACT

- Home: news, links, team standings, events, partners and sponsors
- About: background, goals
- Operation: games, calendar, fields, newcomer info
- Seasons: game schedule, player registration, calendar, past seasons
- Players: rosters, photo gallery, member photos, in memoriam
- Documents: PDF files of league documents
- Contact: email addresses for Board of Directors and managers

Home Page News

Latest News

Thinking about joining us? Check out this [video montage](#) highlighting our 2020 players. Not a frown in the bunch! Also see this [video from the all-star game](#).

We are accepting [registrations for the 2021 season](#), which will begin soon. If you know of possibly interested new players, please help spread the word about WSSL.

Our membership meeting is planned for Tue Mar 9 at 7pm at [Matoaka Elementary](#). Turn left when entering and proceed to the cafeteria.



Quick Links

- [Register for 2021](#)
- [Game schedule and scores](#)
- [Member Awards](#)
- [All-Star Game](#)
- [Member photos](#)

WSSL Team App

- **Join WSSL on Team App:**

Download Team App from the App Store or Google Play, register as a Team App member, search for your team and request to become a member. You can also join via www.teamapp.com.

- **How to Join?**

- 1. Tap search from the main screen or press 'find your team/club' icon.
- 2. Search for your team. **WE ARE WSSL VA**
- 3. Tap become a member.





2021 New Player Recruitment

Recruitment Team:



Sophie



Larry



Stu

Recruiting Actions:

- Exposure:
 - Channel 13 News Item
 - Next Door Neighbor Article on Tyler
 - Gazette Article on WSSL During the Pandemic
- Advertising - New Players Wanted
 - Free Daily Spot in Gazette Sports
 - ¼ page Paid Ad in Gazette Sports
 - Flyers Posted in Williamsburg Public Library, Local Food Lion and Harris Teeter, Colonial Heritage, Fords Colony

YOU Are Our BEST Recruiters

- Engage Friends, Neighbors, Anyone Who Fits Our “Profile”
- Use Materials Provided In Jim’s Email
- Have Them Come To A Scrimmage

**Results: 21 New Paid
“Rookies” And Counting!**

Questions?